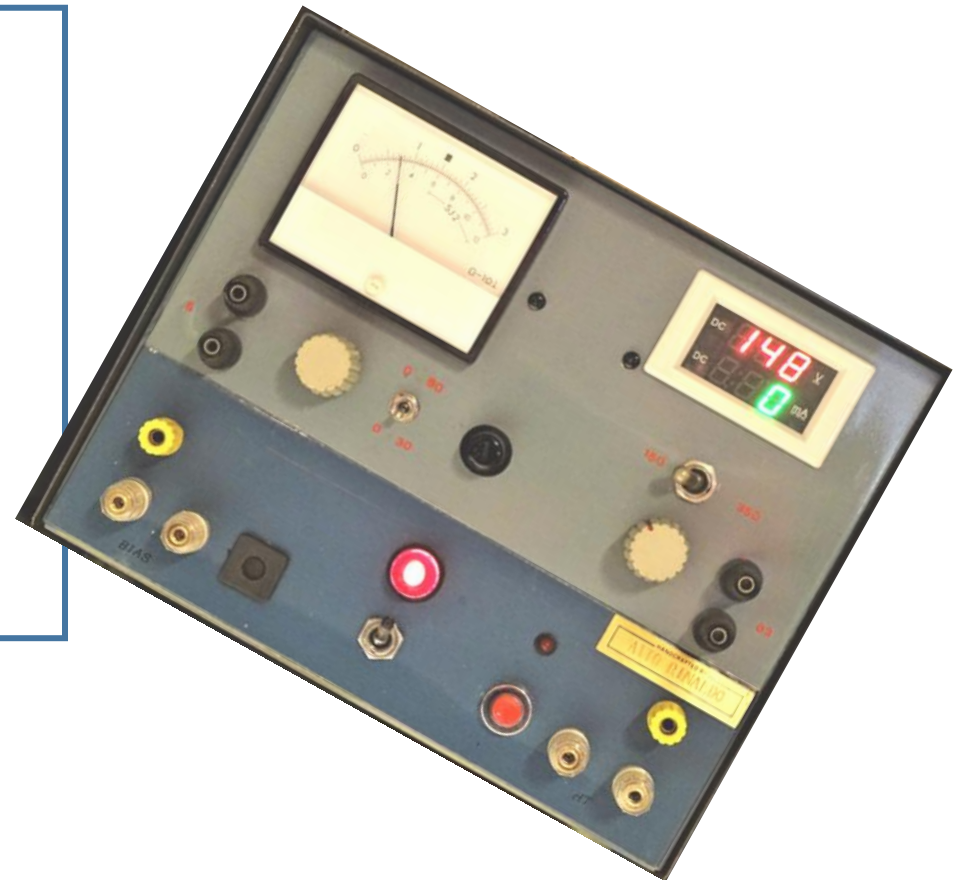
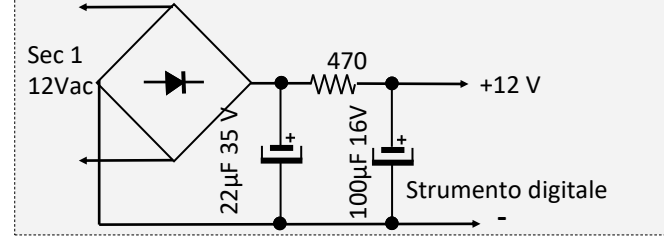
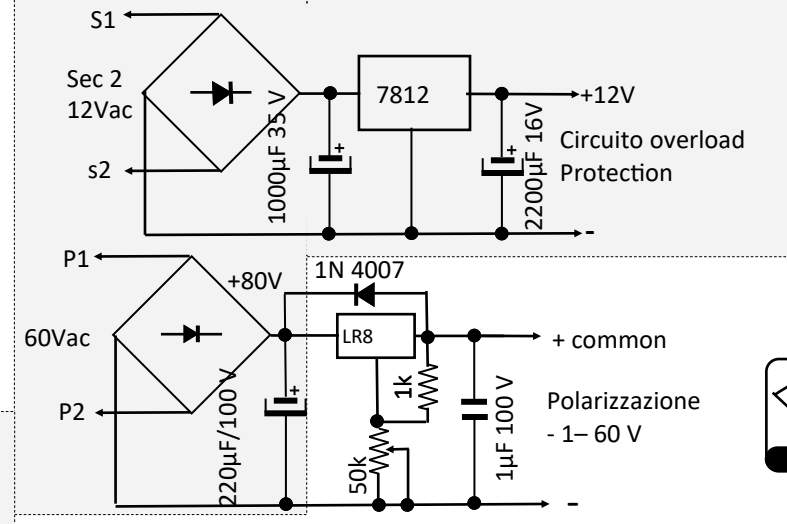
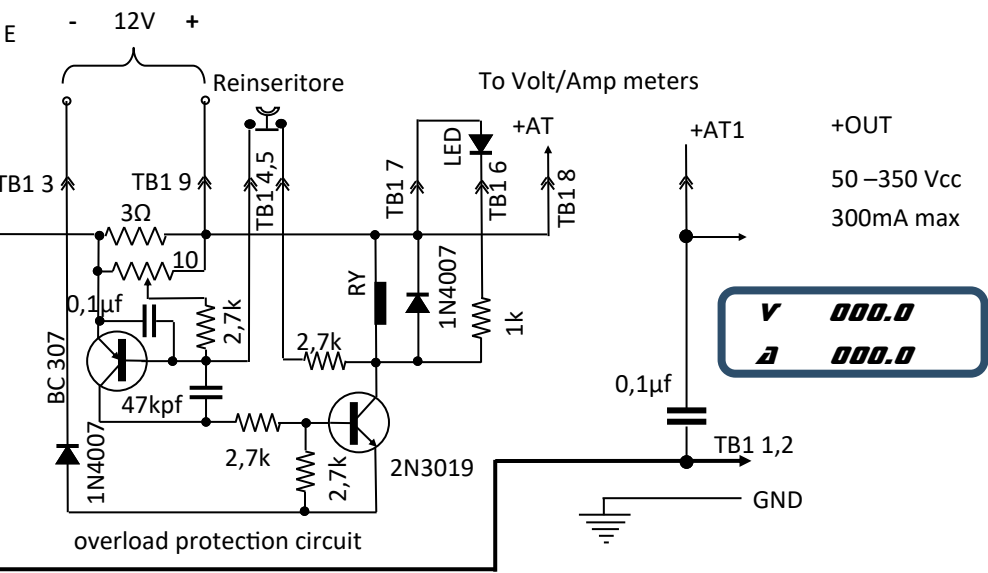
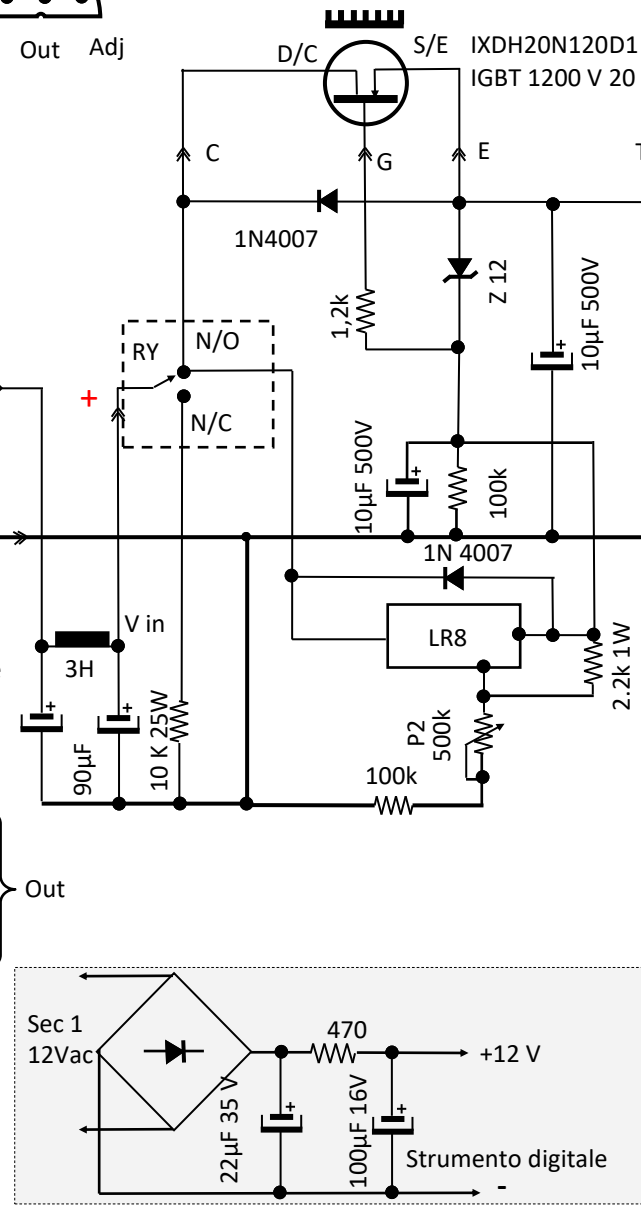
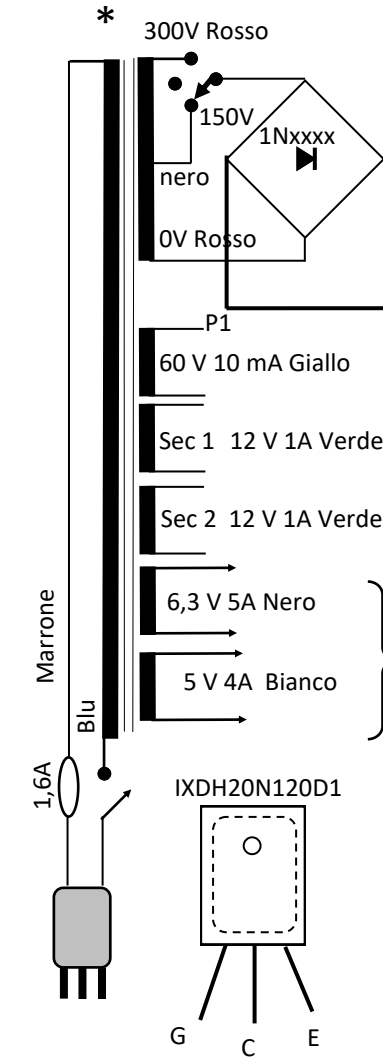
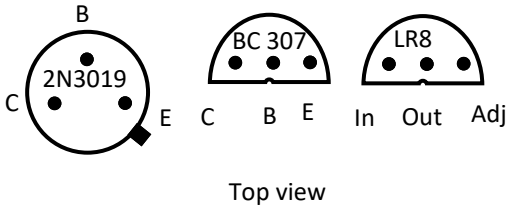
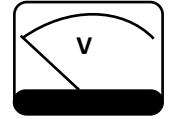


**Alimentatore regolabile
e stabilizzato per chi
opera con valvole
termoioniche**





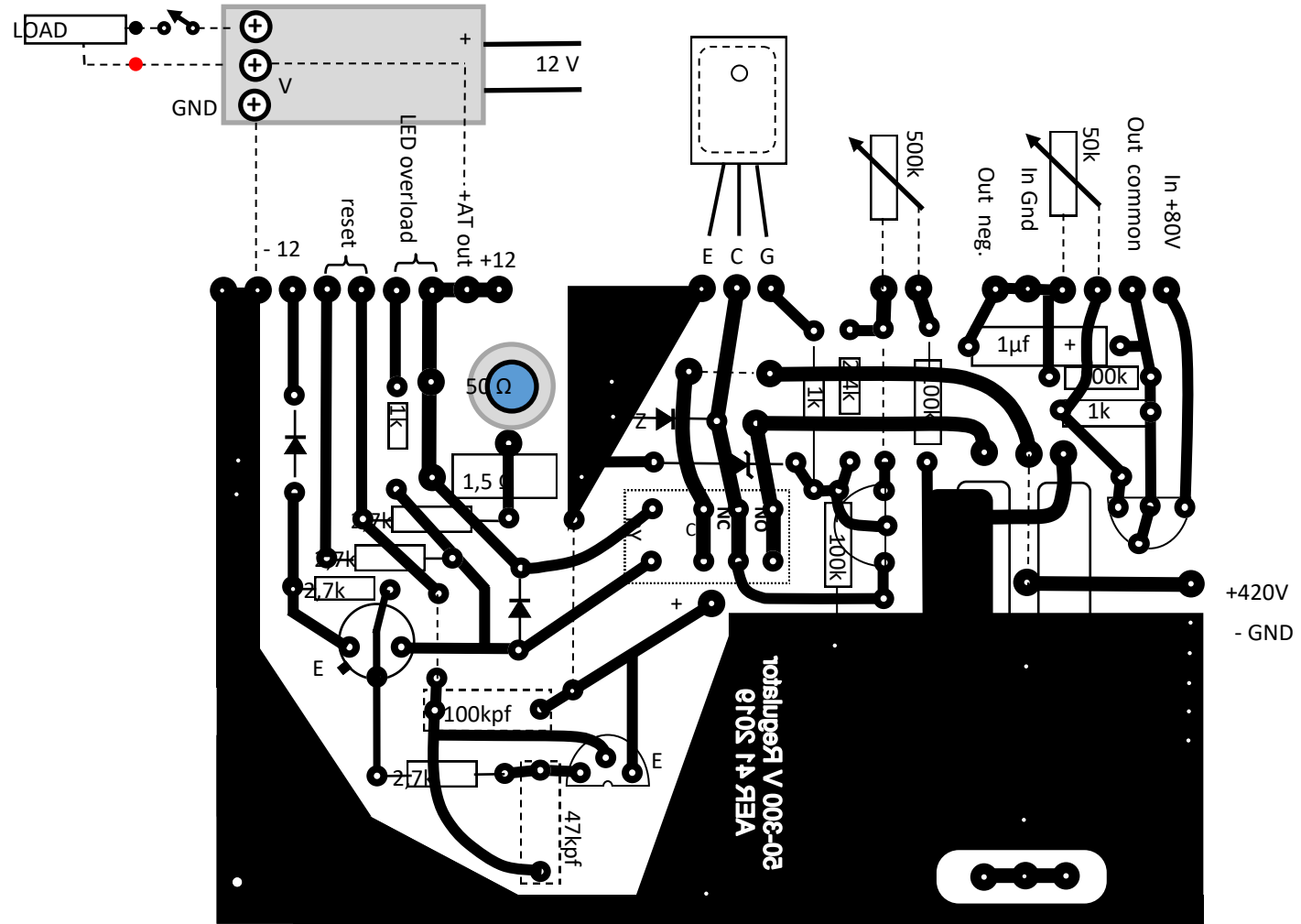
V *000.0*
A *000.0*



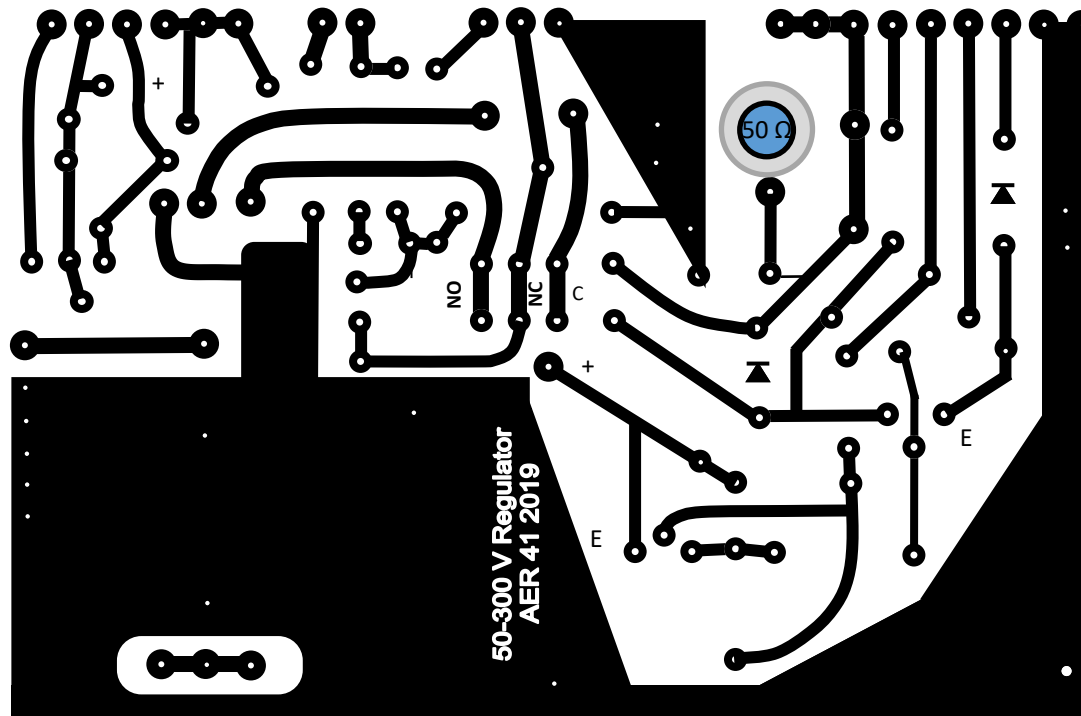
HV variable regulated Power supply
0- 300 volt 300 mA

* Trafo ONORI ATA200EC6 230 sec. 150-0-300 350mA 6,3/4A 5/4 A 12/1A 12/1A 60/0,5A

Sezione regolatore tensione anodica, Bias e protezione cc

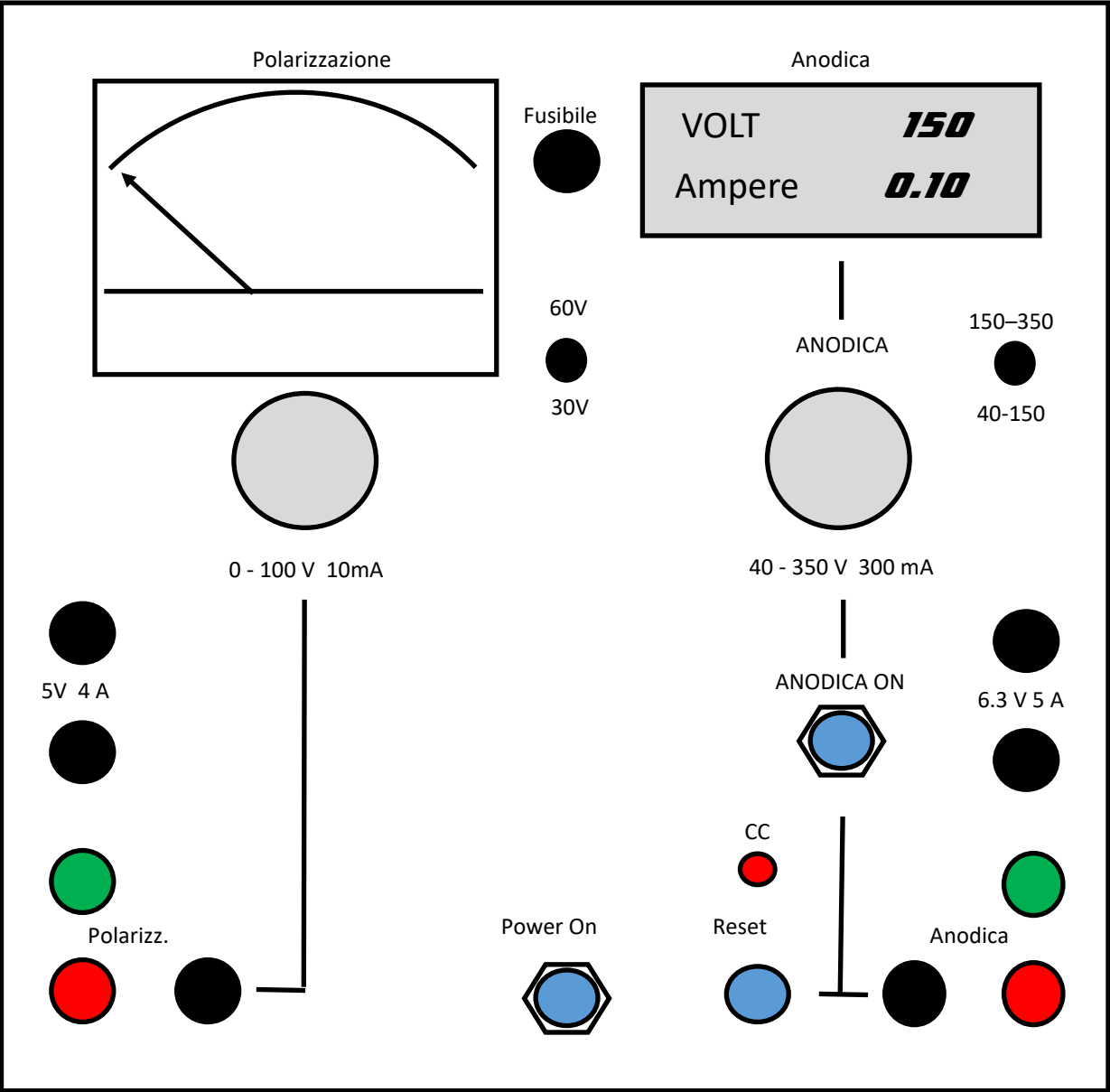


Lato componenti



Lato circuito stampato

Stampa su carta Blu



Prestazioni:

Tensione anodica stabilizzata e regolabile da 50 a 350 Vcc

Massima corrente erogabile 350 mA

Protezione contro i corto circuiti

Tensione e corrente visibili su display digitale.

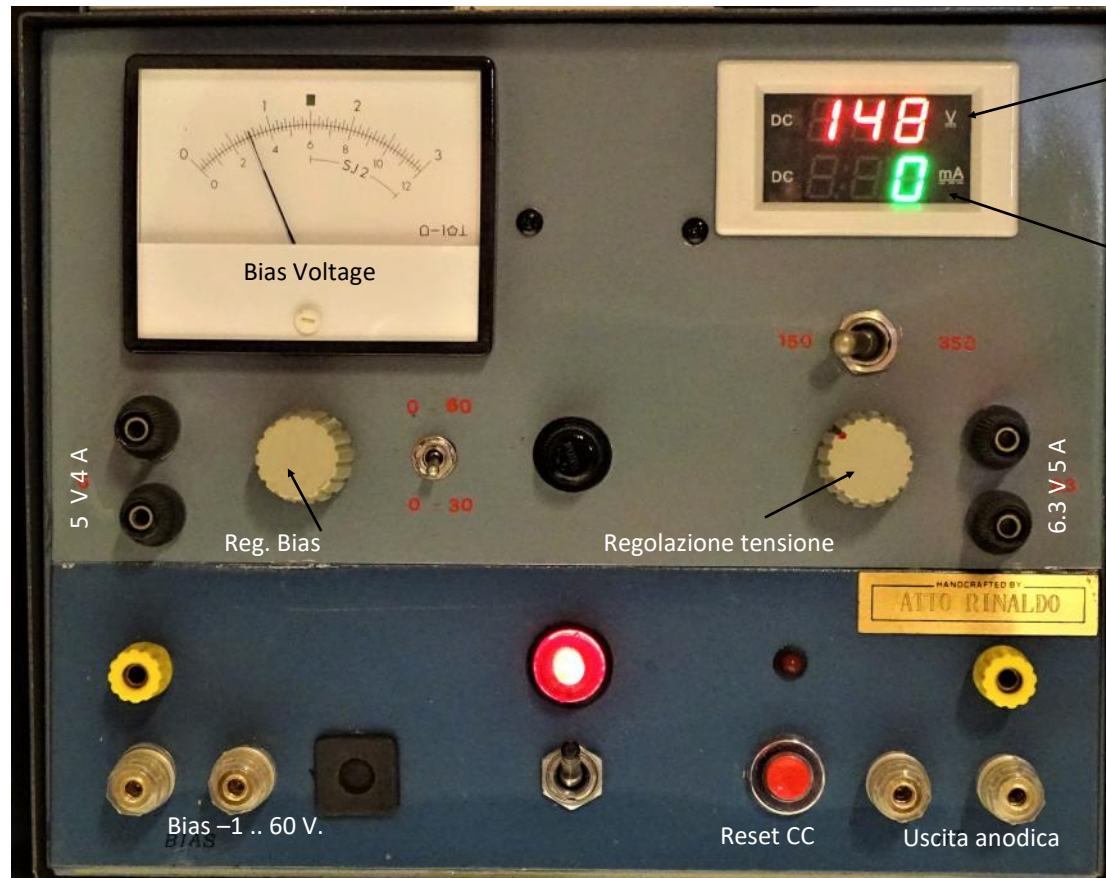
Bias regolabile da 1 a 60 Vcc negativi
5 mA max con voltmetro analogico.

Uscite:

Alimentazione filamenti

5 V. ac 4 Ampere

6,3 Vac 5 Ampere



Tensione anodica 50-150 V
150-350

Corrente max 300mA



Scheda Alimentazione
circuitto di protezione cc

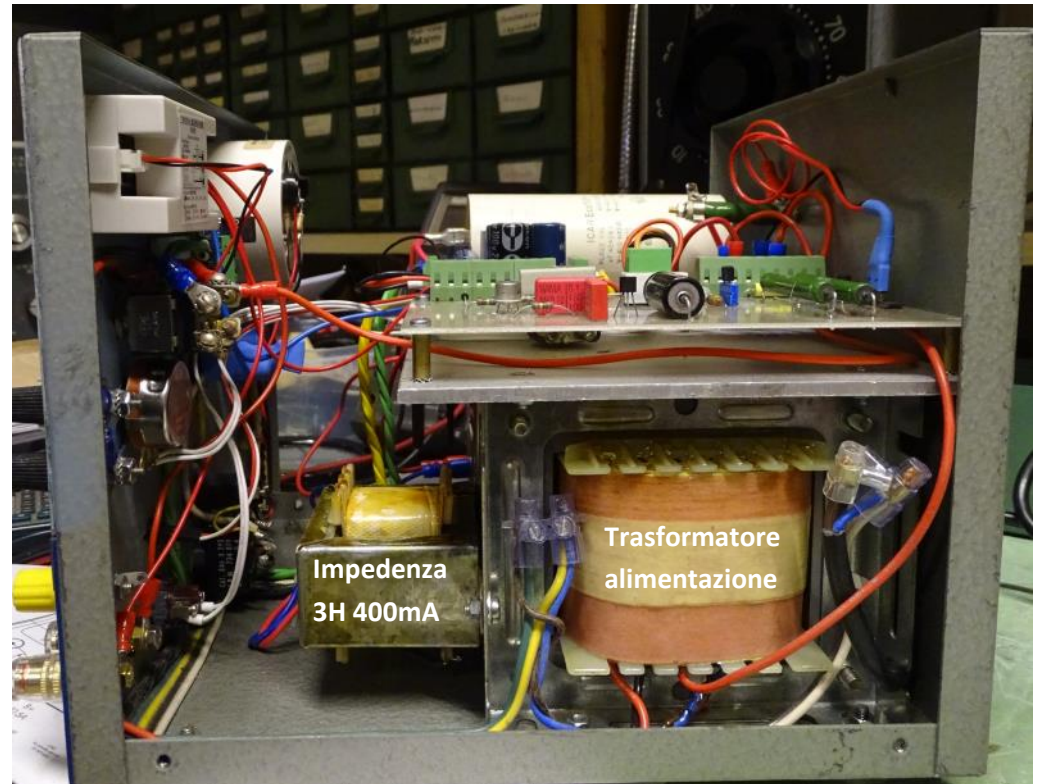
Vista superiore

Scheda regolazione anodica
e protezione CC

Bias reg.



Scheda Alimentazione
strumento digitale



Trasformatore
alimentazione

Impedenza
3H 400mA